

Supplement to AFMAN 32-7003
OUTDOOR RECREATION PROGRAM
AVON PARK AIR FORCE RANGE (598 RANS)
Avon Park, Florida 33825-9381



COMPLIANCE WITH THIS PUBLICATION IS MANDATORY

OPM: 598 RANS/RMFI/Kristopher Pitcher, Ph.D., USAF
Certified by: 598 RANS/CC/Michael S. Ryan, Lt Col, USAF

This instruction prescribes rules and procedures for requesting, authorizing, and controlling hunting, fishing, and other forms of outdoor recreation on Avon Park Air Force Range (APAFR). It applies to all personnel authorized to use this installation for recreation purposes, including active-duty and retired military personnel, Department of Defense (DoD) civilian employees, installation prime-contractor employees, Avon Park Correctional Institution employees, dependents of the aforementioned personnel, volunteers, and members of the public.

This instruction requires collection and maintenance of information protected by the Privacy Act of 1974. The authorities to collect and maintain the data prescribed in this instruction are 44 U.S.C., Section 3101 and E.O. 9397, 24 Nov 43. The Privacy Act statement, required by AFI 37-132, is included on all APAFR applications.

Violations of this instruction may result in civil or criminal penalties.

Table of Contents

1. GENERAL.....	4
2. APPLICABILITY AND SCOPE	4
3. DEFINITIONS	4
4. RESPONSIBILITIES	4
5. PROGRAM ADMINISTRATION.....	5
5.1. Program Management.....	5
5.1.5. Outdoor Recreation Advisory Committee.....	6
5.1.6. Conservation Law Enforcement.....	7
5.2. Fee Collection.....	8
5.3. Safe procedures.....	8
5.4. Deposit procedures	9

5.5. Deposit verification procedures	9
5.6. Equipment Inventory.....	9
6. ACCESSIBLE AREAS AND CATEGORIES OF PARTICIPATION.....	10
6.1. Access Categories.....	10
6.1.1. Open Areas	10
6.1.2. Restricted Areas	11
6.1.3. Off Limits Areas.	12
7. FEES (see Appendix 4).....	12
8. GENERAL ACCESS PROCEDURES.....	12
8.1. Permit Requirements.....	12
8.1.9. MRA Specific Permit Requirements	12
8.2. Permit Types.....	13
8.2.1 Hunt and Companion Hunt Permits	13
8.2.2. Dog Hunt Only Permits	13
8.2.3. Recreation Permits	14
8.2.4. Hunt Guest Permits	14
8.2.5. Special Alligator Hunt Permits	15
8.3 Obtaining a Permit.....	15
8.4. Access Procedures	15
8.4.14 PRA Specific Access Procedures.....	17
8.4.15 MRA Specific Access Procedures.....	17
8.5. Vehicle Use	17
8.5.11 PRA Specific Vehicle Use Instructions.....	18
8.5.12 MRA Specific Vehicle Use Instructions	19
9. REGULATIONS	19
9.1 General.....	19
9.2. Recreation	20
9.2.1. Camping	20
9.2.2 Fishing.....	22
9.3 Hunting	22
9.3.1 General	23
9.3.2. Youth events.....	24
9.3.3. Permissible firearms and weapons.....	25

9.3.4. General use of dogs.....	26
9.3.5. Limited Entry Quota Hunts with Dogs (PRA ONLY).....	27
10. OUTDOOR RECREATION.....	28
1. APPENDICES.....	29
Appendix 1: Glossary of References and Terms.....	29
References:.....	29
Terms:.....	29
Appendix 2: PRA Hunt Season Dates.....	33
Appendix 3: MRA Hunt Season Dates.....	35
Appendix 4: Permit Fees.....	36
A4.1 Hunt Permit Fees.....	36
A4.2. Recreation Permit Fees.....	37
A4.3. Hunt Guest Permit Fees.....	38
A4.4. Camper Storage Fees.....	38
Appendix 5: PRA Map.....	39
Appendix 6: MRA Map.....	41
Appendix 7: Schedule of Violations.....	42

1. GENERAL

1.1. This instruction implements AFMAN 32-7003, *ENVIRONMENTAL CONSERVATION*, and describes the policies, responsibilities, and procedures for management of the Fish, Wildlife, and Outdoor Recreation Program at APAFR.

2. APPLICABILITY AND SCOPE

2.1. This instruction applies to the APAFR components as defined in section 1.1. above.

2.2. Hunting, fishing, and outdoor recreation access is authorized by Federal law (16 USC 670a-670f, as amended), Executive Order 13443, Department of Defense Instruction 4715.3, and Air Force Manual 32-7003. In accordance with these authorizations, the Fish, Wildlife, and Outdoor Recreation Program at APAFR will protect, restore, and maintain fish and wildlife populations and provide a range of outdoor recreational opportunities for military personnel and the public in support of the military mission. Fish, wildlife, and outdoor recreation resources will be managed to support the military mission through an ecologically appropriate and inter-disciplinary approach that is consistent with Department of Defense principles for ecosystem management and biodiversity conservation. The Fish, Wildlife and Outdoor Recreation program will be referred to as the Outdoor Recreation Program for the remainder of this document.

3. DEFINITIONS

3.1. Terms used in this instruction are defined in Appendix 1.

4. RESPONSIBILITIES

4.1. The Installation Commander (598 RANS/CC) will approve and certify the APAFR Outdoor Recreation Operating Instruction annually and control access to use of the installation for outdoor recreation.

4.2. The Range Operations Officer (598 RANS/RMD) is responsible for having current information regarding those portions of the installation that are closed to entry at any given time. This information shall be provided to the Environmental Flight during weekly operations scheduling meetings.

4.3. The Environmental Flight Chief (598 RANS/RMFI) is responsible for the direction and oversight of the Outdoor Recreation Program.

4.4. The Outdoor Recreation Program Manager (598 RANS/RMFI) is responsible for:

1. Issuing access permits to Outdoor Recreation Program users as needed.

2. Ensuring compliance with recreational-use regulations, including spot-checks of personnel and vehicles on a regular basis for permits and adherence to all entry and use procedures.
3. Ensuring that all permitted individuals using the installation for recreation sign a Release of Liability for Personal Injury.
4. Ensuring that all permitted individuals using the installation for recreation clearly understand that recreational access is secondary to the military training mission and that this privilege can be provided only if recreational access does not affect military training.
5. Ensuring that all Air Force personnel, including volunteers, are aware of procedures for control of program activities.
6. Developing an annual Outdoor Recreation Management Plan and Budget which will provide for the development and protection of outdoor recreation resources.
7. Coordinating with all federal, state, local, and/or private entities involved in the development of regulations governing recreational use by the public.
8. Serving as co-chairperson of the Outdoor Recreation Advisory Committee (see section 5.1.5.).
9. Reporting program activities regularly through the chain-of-command.

5. PROGRAM ADMINISTRATION

5.1. Program Management

The Sikes Act, 16 U.S.C. § 670a(a)(3)(A), requires that, consistent with the use of a military installations to ensure the preparedness of the Armed Forces, military installations must provide for the sustainable multipurpose use of the resources, to include hunting, fishing, trapping, and non-consumptive recreational access. Hunting, fishing, trapping and dispersed outdoor recreation programs are appropriate on AF installations when they are consistent with INRMP goals for natural resources management, and are in accordance with installation security and safety requirements.

- 5.1.1. Fish and game harvests must comply with all federal and state laws and regulations and will be consistent with DoD principles for ecosystem management and biodiversity conservation.
- 5.1.2. The Outdoor Recreation Program is administered by personnel employed through the program budget (see section. 5.2.). Current and planned employees include a full-time Supervisory Wildlife Biologist (Program Manager), a full time Office manager, and several (2-3) Park Rangers. Seasonal volunteers further support program administration.

5.1.3. Installations may utilize the voluntary assistance of others to help manage hunting and fishing programs, to include units of the Air Force Personnel Center Directorate of Services, Force Support Squadrons, and non-AF affiliated clubs (e.g., Rod and Gun Club); but these organizations shall not direct activities related to hunting, fishing, trapping and outdoor recreation that are outside the scope and direction of the installation INRMP.

5.1.4. Volunteer Program. The volunteer program is administered as outlined in the APAFR Volunteer Program Operating Instruction.

5.1.5. Outdoor Recreation Advisory Committee.

An Outdoor Recreation Advisory Committee composed of representatives from each of the public stakeholders' groups (permit holders) involved in the Outdoor Recreation Program is convened, as needed, to advise the Air Force on issues relevant to successful management of the program.

5.1.5.1. One representative from each stakeholder group shall be selected every two years, prior to August 31, from among the active participants of each stakeholder group in the program. Each stakeholder group will have up to two representatives.

5.1.5.2. A committee member shall only represent the stakeholder group for which he/she has purchased a Permit.

5.1.5.3. Nominations for the Advisory Committee will be accepted from the beginning of the sale of Public Recreation Area Permits until two weeks prior to the August 31, once every two years.

5.1.5.4. Nominees must sit in on the committee as a guest for a minimum three meetings before becoming a member. Nominees must be a permit holder for a minimum of three years.

5.1.5.5. Advisory Committee members shall reserve the right to opt out of representation of their stakeholder group at any time. An appointee, chosen by Outdoor Recreation staff, shall fill in until a new representative has been selected.

5.1.5.6. Each meeting is advertised, to include an agenda, to all permit holders in advance at <https://avon.isportsman.net>.

5.1.5.7. Meetings are limited to advisory committee members only; however, a limited number of guests are permitted upon request, when appropriate.

5.1.5.8. The program manager publishes meeting minutes after each meeting and posts them to <https://avon.isportsman.net>.

5.1.5.9. This Committee acts in an advisory capacity only and shall not direct policy of the Outdoor Recreation program.

5.1.5.10. Advisory Committee meetings shall be held quarterly. Representatives are required to attend a minimum of two meetings per year to remain on the Committee.

5.1.5.11. Current representatives shall be retained for another term of service or replaced by an appointee selected by Outdoor Recreation staff, in the event there is a lack of interest from the stakeholder group in question.

5.1.6. Conservation Law Enforcement.

The Outdoor Recreation Program works in cooperation with Florida Fish and Wildlife Conservation Commission (FWC) to provide routine patrols on installation. APAFR does not provide law enforcement by Air Force personnel.

5.1.6.1. Quarterly the Outdoor Recreation Program Manager will submit patrol requests to the Florida Fish and Wildlife Conservation Commission. The majority (75% or more) of the patrol hours required by the cooperative agreement, with the Florida Fish and Wildlife Conservation Commission, shall occur from Friday to Monday when the Outdoor Recreation program is open to the public, unless a targeted patrol effort is needed.

5.1.6.2. Outdoor Recreation staff will inform the Florida Fish and Wildlife Conservation Commission Lieutenant on Wednesday if the range schedule closes the Public Recreation area Friday to Monday.

5.1.6.3. The monthly summary will be reviewed by the Outdoor Recreation Program manager. The program manager will compare the patrol logs with the Public Recreation Area schedule to ensure 75% or more of the hours patrolled are during times the Outdoor Recreation Program is open to the public. The program manager will coordinate with the Florida Fish and Wildlife Conservation Commission to adjust the patrol schedule as needed.

5.1.6.4. The Outdoor Recreation Program Manager meets monthly with FWC officials to ensure program quality and continuity. Updates on this program are reported through the chain-of-command.

5.1.6.5. If an individual is cited by an FWC officer, a written violation report will be filed by the officer with the Outdoor Recreation Program, to include the State citation, if applicable, within one week of the violation.

5.1.6.6. Outdoor Recreation Personnel will prepare a written report to the Installation Commander for all violations within one week of receiving a violation report.

5.1.6.7. Violation of certain regulations, as noted in Appendix 7, will result in individuals being immediately escorted from the installation. Vehicle decals or passes will be removed from any involved vehicles, permits confiscated, and the individuals directed not to reenter the installation until further notice from Outdoor Recreation staff.

5.1.6.8. When violations result in a warning, the Outdoor Recreation Program will retain records for at least two years to determine if repeat offenses are occurring and measures that are more stringent are necessary.

5.1.6.9. When violations result in suspension of outdoor recreation privileges, the schedule in Appendix 7 will be used to establish the term. This schedule is not comprehensive and serves as general guidance in determining suspension terms for common violations. Suspension letters are retained for at least three years after the end of the suspension period to determine if repeat offenses are occurring and measures that are more stringent are necessary. Repeat offenses or multiple violations will result in increasing the suspension.

5.1.6.10. When violations result in a recommendation to bar the individual from access to APAFR, the Installation Commander will forward the case to Moody AFB for official action.

5.1.6.11. All violations reported by permit holders are forwarded to law-enforcement personnel to be investigated. These reports are retained for two years to determine trends in violations.

5.2. Fee Collection

Administrative and management costs associated with hunting, fishing, trapping and the management of outdoor recreation access are fully reimbursed by user fees. Fees are collected by the installation and deposited into the AF account for fish and wildlife management (57 5095).

5.2.1. Cash collection procedures. Outdoor Recreation cashiers accept no more than \$50 cash per transaction via the Point of Sale (POS) system. Certified checks and money orders are accepted. No personal checks are accepted.

5.2.2. iSportsman. iSportsman is used as an electronic method to collect funds. Funds collected thru iSportsman go thru pay.gov and directly into the AF account for the fish and wildlife management (57 5095). Transaction reports are reviewed once a month.

5.2.3. If cash is collected, personnel generate an item summary report at the end of shift reports in POS and duplicate them on a cashier's log.

5.2.4. Each cashier counts collected fees at the end of the shift, verifies them against the end of shift report and cashiers log, and places them in the cashier's locked moneybag located in the safe.

5.3. Safe procedures

5.3.1. The AF- approved safe is in a secure room, along with the change funds.

5.3.2. A work order must be submitted to Civil Engineering department to change the combination lock on the safe. The combination lock will be changed every time there is a change in personnel, or at least once per year.

5.3.3. Personnel record each entry to the safe on AF-702 security container check-sheet.

5.4. Deposit procedures

5.4.1. As needed, two permanent, full-time Outdoor Recreation staff members will open the safe together and count the cash from all cashier's deposits.

5.4.2. Both permanent employees will fill out an AF-1875 Cashier's Report, monies will be recorded by type and amount, and verified against the POS system and the Cashier's Log. Beginning and ending balances, including relevant dates and change fund monies, are included. Staff clearly identify any shortages/overages. Both staff persons will sign AF-1875 to verify cash amounts and record accuracy.

5.4.3. Two staff members convert cash to money orders at a nearby USPS facility for mailing in deposit to US Treasury.

5.4.4. Deposits are mailed with standard DD Form 1131, which includes summarized details of funds records on AF-1875 and detailed information on money orders and certified checks.

5.4.5. Each DD Form 1131 is signed and verified by a staff member before delivery by certified mail.

5.5. Deposit verification procedures

5.5.1. A signed certified mail certificate verifies receipt of mailed deposit.

5.5.2. Monthly transaction reports will be run via avon.isportsman.com to track funds bought thru permit sales on iSportsman.

5.6. Equipment Inventory

5.6.1. Outdoor Recreation personnel attended material management and inventory accountability training.

5.6.2. Outdoor Recreation GPC card holder will update the inventory list any time an item of value (\$50 or more) or a pilferable item is purchased.

5.6.3. Staff will conduct an annual inventory to locate and evaluate the condition of every item on the inventory list. Upon completion of the annual inventory, an inventory report will be forwarded to Environmental Flight.

5.6.4. Items that cannot be found will be reported.

5.6.5. Items deemed unfit for use will be turned into base supply to be disposed of. Once an item is turned into supply it will be removed from the inventory list.

6. ACCESSIBLE AREAS AND CATEGORIES OF PARTICIPATION

Installation policy for hunting, fishing, trapping, and non-consumptive recreational access indicated in the Sikes Act (16 U.S.C. § 670a(a)(3)(A)) is based upon safety, mission requirements, and the ability of the natural ecosystem to sustain these activities.

6.1. Access Categories

6.1.1. Open Areas

Unrestricted areas on the installation where hunting, fishing, trapping, and outdoor recreation are permitted to all participants.

6.1.1.1. The Public Recreation Area (PRA) is an open area on the installation where hunting, fishing, trapping, and outdoor recreation are permitted to all participants. The PRA is divided into eighteen (18) management units and three (3) primitive campgrounds (Appendix 5). These units are generally opened to access weekly (Friday – Monday) depending upon military activities, as determined by the 598 RANS/RMFI. However, the PRA may be open on other weekdays to accommodate public recreation due to mission restriction or special hunts. To ensure participant safety, management units are closed during ground activities or ordnance deliveries in which a hazardous footprint extends beyond the impact area. Management-unit configuration will remain compatible with current weapons delivery system footprints to ensure the availability of the largest amount of recreation area without impacting the mission.

6.1.1.2. All categories of participants are eligible for access, to include:

- Active-Duty Military (includes Reserve and National Guard on active duty or full-time manning)
- Department of Defense Civilians
- Active-Duty Military Dependents and Family Members
- Disabled Veterans
- Military Retirees
- Department of Defense Civilian Retirees
- Employees of Installation Prime Contractors (defined as a contractor with a five or more-year term contract).
- General Public.

6.1.1.3. Permits shall be sold as indicated in Appendix 4.

6.1.1.4. Access to the PRA is affected by Force Protection Conditions (FPCON) as follows:

- FPCON Normal and Alpha: Access is regulated as indicated section 8.6.
- FPCON Bravo: In addition to FPCON Normal and Alpha access protocols, volunteers will inspect everyone's personal identification and match it to a current permit before granting entry onto the installation.
- FPCON Charlie and Delta: The range will be closed to all Outdoor Recreation participants.

6.1.2. Restricted Areas

Areas designated by the commander where hunting, fishing, trapping, and outdoor recreation are permitted to certain categories of participants or under special arrangements as defined by the commander.

6.1.2.1. The Military Recreation Area (MRA) is a restricted area on the installation where hunting, fishing, trapping, and outdoor recreation are permitted to a limited group of participants. The MRA is divided into ten (10) management units and one (1) primitive campground (Appendix 6). Seven of these units are opened to access weekly (Friday to Monday) depending upon military activities, as determined by the 598 RANS/RMFI. Military Recreation Area Permit holders may also utilize Public Recreation Area unit 14 (Friday –Monday). The remaining three units are open seven days a week (Thursday – Wednesday) depending upon military activities, as determined by the 598 RANS/RMFI. To ensure participant safety, management units are closed during certain airfield or ground activities. Management-unit configuration will remain compatible with the current military mission to ensure the availability of the largest amount of recreation area without impacting the mission. Gate codes may be issued per season, at the discretion of the Installation Commander or designee, to MRA permit holders, to allow seven day a week access.

6.1.2.2. Limited categories of participants are eligible for access, to include:

- Active-Duty Military (includes Reserve and National Guard on active duty or full-time manning)
- Department of Defense Civilians
- Active-Duty Military Dependents and Family Members
- Disabled Veterans: Limited to Purple Heart Recipients and 100% Disabled Veterans.
- Military Retirees
- Department of Defense Civilian Retirees
- Employees of Installation Prime Contractors (defined as a contractor with a five or more-year term contract).
- Current employees of Avon Park Correctional Institute.

6.1.2.3. Permits will be sold as indicated in Appendix 4.

6.1.2.4. The number of Military Recreation Area Permits sold may be limited.

6.1.2.5. Access to the MRA is affected by Force Protection Conditions (FPCON) as in section 6.1.1.4.

6.1.3. Off Limits Areas

Areas designated by the commander as being off limits to recreational hunting, fishing, trapping and dispersed outdoor recreation by any person at any time. These are areas where mission security and safety concerns will not allow such use.

6.1.3.1. These areas are delineated on maps for the PRA and MRA (Appendices 6 and 7) and well-marked in the field according to AFMAN 13-212. No one participating in the Fish, Wildlife, and Outdoor Recreation program is eligible for access.

6.1.3.2. Access to these areas is unaffected by FPCON.

7. FEES (see Appendix 4)

8. GENERAL ACCESS PROCEDURES

8.1. Permit Requirements

8.1.1. All individuals 18 years of age or older (on or before 01 September of the permitted hunting year) are required to purchase a Permit to access Avon Park Air Force Range.

8.1.2. An appropriate photo ID card identifying the status of the bearer must be presented upon pick-up of any Permit from the Outdoor Recreation Office. All persons 16 years or older must carry some form of current photographic identification while on the installation.

8.1.3. Purchase of any Permit certifies that the individual named on the Permit has signed a Release of Liability and a statement that he/she understands and will abide by these regulations. The Air Force is not responsible for the personal property of Permit Holders.

8.1.4. All Permit Holders must receive an annual safety briefing prior to receiving a Permit.

8.1.5. By accepting any APAFR Permit, Permit Holders give consent to have their vehicles searched while on the installation. If a vehicle is towed or impounded, Permit Holders are liable to reimburse the towing agent on behalf of the vehicle owner/operator.

8.1.6. All children under the age of 18, whereas the permit holder is not their legal guardian, a properly completed parental consent form must be on file before the permit holder can bring the underage child as a guest. Parental Consent forms expire August 31, each year.

8.1.7. All persons under the age of 18 must ride in the vehicle with a Permit Holder.

8.1.8. All permits are non-refundable and non-transferrable.

8.1.9. MRA Specific Permit Requirements

8.1.9.1. MRA Hunt Permits are available for Active-Duty and Retired Military personnel or 100% Disabled Veterans. A valid Military CAC Card or Military ID must be presented at the time of purchase.

8.1.9.2. MRA Hunt permits are also available to all other eligible categories of participants as listed in section 6.1.2.2 with proper identification indicating eligibility.

8.2. Permit Types

Copies of the regulations are available online at <https://avon.isportsman.net/regulations/> and will be provided upon purchase of any annual or seasonal Permit. Permits are valid from 01 August until 31 July the following year.

8.2.1 Hunt and Companion Hunt Permits

8.2.1.1. Hunt and Companion Hunt Permits allow the Permit Holder to hunt (including participation in Limited Entry Dog Hunts), fish, camp, or engage in any allowed recreational activity. Hunt and Companion Hunt Permit Holders may bring in up to three (3) children under the age of 18 free of charge; only one (1) child may carry a firearm while hunting in this manner.

8.2.1.2. Hunt and Companion Permit Holders may bring in one (1) Hunt Guest as stated in Section 8.2.4

8.2.1.3. Military-discounted PRA Hunt and PRA Companion Hunt Permits are available to eligible Active Duty and Retired military personnel and their spouses or significant others. These Permits allow Permit Holder all activities as outlined in para 8.2.1.1.

8.2.1.4. Purple Heart Hunt and Companion Hunt Permits are available to eligible Purple Heart Recipients and their spouses or significant others. These Permits allow Permit Holders all activities as outlined in para 8.2.1.1. but allow access to both the Public and Military Recreation Areas under one Permit.

8.2.1.5. All Hunt and Companion Permit Holders listed above may bring in one (1) Hunt Guest as stated in Section 8.2.4.

8.2.2. Dog Hunt Only Permits

8.2.2.1. Dog Hunt Only Permits allow the Permit Holder to hunt for four (4) weekends of deer dog hunts and five (5) weekends of hog dog hunts in specified Dog Hunt Units on the Public Recreation Area.

8.2.2.2. PRA Dog Hunt Only Permits are only valid on the Public Recreation Area during the scheduled Limited Entry Dog Hunts.

8.2.2.3. PRA Dog Hunt Only Permit Holders may not bring in a Hunt Guest at any time.

8.2.3. Recreation Permits

8.2.3.1. Annual and Weekend Recreation Permits allow the Permit Holder to fish, camp, hike, or engage in any allowed recreational activity, with the exception of taking wildlife. However, Recreation Permit Holders may be present with a Hunt Permit Holder under their direct supervision. Recreation Permit Holders may bring in up to three (3) children under the age of 18 free of charge.

8.2.3.2. Weekend Recreation Permits allow for one (1) weekend visit per purchase. These Permits must be purchased Mondays through Thursdays to allow time for processing. Weekend Permits are valid until picked up by the Permit Holder.

8.2.3.3. Annual and Weekend Recreation Permit Holders may not bring in a Hunt Guest at any time.

8.2.4. Hunt Guest Permits

8.2.4.1. Hunt Guests of all Hunt Permit Holder types shall create their own iSportsman accounts and purchase their own Hunt Guest Permits. Hunt Permit Holders shall not purchase Guest Permits on behalf of their Guest. Hunt Guest Permits are available for purchase Mondays through Thursdays to allow time for processing.

8.2.4.2. Hunt Guests are under the direct control of their host Hunt Permit Holder while on the installation. Direct control is herein defined as being within visual or voice range (electronic communication is acceptable if hunting in the same Management Unit). Failure to properly escort and supervise any Hunt Guest(s) will result in the suspension of all privileges of the Hunt Guest and the host Permit Holder.

8.2.4.3. *PRA Specific Hunt Guest Permit Instructions*

8.2.4.3.1. PRA Hunt Guest Permits are valid for one (1) weekend per purchase.

8.2.4.3.2. PRA Hunt Guests may hunt a maximum of three (3) weekends during a single permit year (01 August – 31 July).

8.2.4.3.3. PRA Hunt Guest Permits are invalid the first weekend of each hunt season and the first four (4) weekends of Spring Turkey Season.

8.2.4.3.3. PRA Hunt Guests must share a vehicle with their host Hunt Permit Holder. PRA Hunt Guest vehicles shall be stored at the Outdoor Recreation Office overflow parking area.

8.2.4.4. *MRA Specific Hunt Guest Permit Instructions*

8.2.4.4.1. MRA Hunt Guest Permits are valid for one (1) week from the date of purchase.

8.2.4.4.2. MRA Hunt Guests may hunt a maximum of fifteen (15) weeks during a single permit year (01 August – 31 July); exceptions may be made on a case-by-case basis.

8.2.5. Special Alligator Hunt Permits

Special Alligator Hunt Permits may be sold on an individual basis at the discretion of the Outdoor Recreation Program Manager with approval from the Installation Commander. The Permit Holder will harvest one alligator. All state rules, regulations, and licenses will apply. No firearms will be used, except for bang sticks.

8.3 Obtaining a Permit

All individuals eligible for a permit at Avon Park Air Force Range shall purchase a permit using the following steps:

1. Log on to <https://avon.isportsman.net>
2. Click on the “Log In” tab. Sign in using your Login ID and password; if creating an iSportsman account for the first time, click on the “Register” tab.
3. To register for an account for the first time, enter all required information. All iSportsman account information shall match that on the individual’s current Driver’s License. Falsified account information may result in a suspension of recreation privileges.
4. It is the responsibility of the individual to verify his/her account information when setting up an account or renewing a Permit. All individuals shall update their iSportsman account information annually, especially the contact and vehicle information.
5. A valid email address is required and is the only way for the permit holder to recover a forgotten Login ID or password online. A forgotten Login ID can also be recovered, or a forgotten password reset, by calling Outdoor Recreation Office during posted business hours.
6. Do not create a duplicate iSportsman account. If you have trouble accessing your account, contact the Outdoor Recreation Office for assistance. Beginning when the 2022-2023 Permits go on sale, individuals creating duplicate accounts or multiple iSportsman accounts may be subject to suspension of recreation privileges.
7. Click the “My Safety Briefs” tab on the account homepage. Watch the two briefing videos and pass short quizzes.
8. Click the “Acquire Permits” button to purchase the desired Permit(s).

Companion Permits, Military Discounted Permits and Purple Heart Permits require a validation to be available for purchase. Contact Outdoor Recreation Office by phone or email to request a validation be placed on your account.

8.4. Access Procedures

8.4.1. Permit Holders shall enter and exit the installation only at the designated access points when open to the public. Designated access points are the Gate 2 (600 gate), and North Frostproof Gate (when open).

8.4.2. Upon entering the installation, Permit Holders must proceed directly to the PRA sign-in station at Building 600.

8.4.4. The following sign-in procedures must be observed by all Permit Holders:

- a. Sign in and sign out using the logbook located at building 600 or via <https://avon.isportsman.net>.
- b. Staff has the authority to refuse entry to any individual who cannot present proper identification and permit documentation. A vehicle decal alone does not grant access to USAF property.
- c. Permit Holders shall review the Management Unit Board at the sign-in station. This Board identifies which Management Units and Campgrounds are open for public access, as well as any Management Units and/or campgrounds closed by administrative action. This Board is the only official open/closure listing and should be reviewed upon every entry.
- d. As updates to the military range schedules can occur within 24hrs, it is the Permit Holder's responsibility to check the Management Unit status each day. This can be done at the time of sign-in or reviewing schedule at the information kiosks at Willingham and Morgan Hole, and Austin Hammock Campgrounds.

8.4.5. Permit Holders who fail to sign in or out are subject to having their recreational privileges revoked.

8.4.6. Except on a closing night, Permit holders who exit the installation after the posted gate closure time are required to sign out via email to apafroudoorrec@gmail.com. Permit holders shall include their name and Permit number and the name and permit numbers of any other permit holders riding with them.

8.4.7. All Permit Holders shall be signed out and off the installation by the posted gate closure time on a closing night, regardless of their activities at that time. Repeated tardiness may be subject to suspension of recreation privileges.

8.4.8. Access for recreational activities is always subject to limitations based on the military mission and hunting season. As such, public access may or may not be permitted at any time or as authorized by the Installation Commander.

8.4.9. Should Permit Holders hear three blasts from an air horn while on the installation they shall cease all other activities and return to your vehicle immediately. Updated information will be posted at the information kiosks at Building 600, Morgan Hole, Willingham, and Austin Hammock Campgrounds.

8.4.10. Permit Holders shall park their vehicles on the same side of the road as the Management Unit they are entering.

8.4.11. If someone needs to contact a Permit Holder in case of an emergency off installation, they may call the Outdoor Recreation Office at (863) 449-0138 or (863) 449-7913. They must have the following information available: permit number, type of vehicle, tag number and campground being used so that staff may locate the permit holder.

8.4.12. In the event of a medical emergency on the installation, Permit Holders shall call 911 and then notify Outdoor Recreation immediately. Rescue Ops emergency phone number is (863) 452-4117.

8.4.13. For any non-medical emergency issues, call the Outdoor Recreation Office at (863) 449-7913 during posted office hours. For issues after hours, call (863) 449-0138 or Rescue Ops at the non-emergency phone number: (863) 452-4225.

8.4.14 PRA Specific Access Procedures

Permit Holders may launch and land boats at the Kissimmee River boat ramp only after being signed in at the Outdoor Recreation Office. Mooring boats is prohibited outside of the designated boundaries of Fort Kissimmee Campground and Fort Kissimmee Cemetery.

8.4.15 MRA Specific Access Procedures

8.6.15.1. MRA Permit Holders shall sign in during the week, or during weekends, via <https://avon.isportsman.net>, when entering or exiting the installation.

8.6.15.2. Management Unit 14 shall be utilized by both PRA and MRA Permit Holders. Unit 14 is considered part of the Public Recreation Area and as such, will follow the PRA regulations and season dates.

8.6.15.3 In the event Jennings and Utes Roads are closed and the MRA units are open, authorized MRA permit holders may be issued a code to enter at gate 1 and gate 4.

8.5. Vehicle Use

8.5.1. Each annual Permit Holder will be issued a vehicle pass in addition to his/her permit. This pass is to be permanently affixed to the outside driver's side windshield of the Permit Holder's vehicle to indicate they are an outdoor recreationist. The vehicle pass allows for easy identification of the vehicle by installation staff in the case of emergencies. The vehicle pass is **NOT** the equivalent of a use permit. The Permit Holder will be held accountable for the actions of all individuals operating or riding in a vehicle bearing his/her vehicle pass.

8.5.2. If the vehicle bearing the pass is sold or transferred to another individual, the pass shall be removed before the vehicle leaves the Permit Holder's possession and returned (whole or in pieces) to the Outdoor Recreation Office.

8.5.3. Military, Air Force contractor, and official AF Program vehicles always have the right-of-way.

8.5.4. Driving around or moving any type of barricade is strictly prohibited.

8.5.5. The use of tracked vehicles, motorized cycles, golf carts, ATVs, LSVs, UTVs, rail buggies, dirt bikes, is prohibited. Only rubber-tired vehicles not previously listed are permitted. This prohibition includes all ATVs, LSVs, UTVs, and/or rail buggies, which may otherwise be considered street legal.

8.5.6. A Law Enforcement Officer may search any camp, vehicle, or boat, in accordance with the law. No person shall refuse or obstruct such inspection by any authorized officer of the state.

8.5.7. Bicycle use is authorized on all designated roads, as well as along all unmarked fence lines and firebreaks.

8.5.7.1. Riders must wear a highly visible outer garment during the day, and an outer garment containing retro-reflective material at night.

8.5.7.2. Riders must wear a properly fastened, approved (e.g., Consumer Product Safety Commission, ANSI, Snell Memorial Foundation, or host nation equivalent) bicycle helmet.

8.5.7.3. Mopeds, motorcycles, and electric bicycles are prohibited.

8.5.8. No person shall park any vehicle in a manner which obstructs a road, gate, bridge or firebreak.

8.5.9. No person shall ride upon any vehicle in any manner not designated or intended for the use of passengers.

8.5.10. The use of vehicles is prohibited in the Public Recreation Area between 22:00 and 04:30, except on Frostproof, Smith, Old Bravo, and Kissimmee Roads (or during verifiable emergencies, or after having received prior approval by the Outdoor Recreation Program).

8.5.11 PRA Specific Vehicle Use Instructions

Vehicles must be operated only on roads designated on the current year Public Recreation Area map. If a Permit Holder is caught without permission on a road not designated on the current year PRA map, he/she will be subject to suspension. Exceptions include:

Exception 1: PRA Hunt Permit Holders may drive firebreaks range-wide after General Gun Season until the end of Small Game Season (see Appendix 2) without first obtaining permission from the Outdoor Recreation Office.

Exception 2: Permit Holders may drive on existing firebreaks to retrieve downed game only after receiving verbal authorization from Outdoor Recreation staff.

Exception 3: After receiving verbal authorization from the Outdoor Recreation Office, Permit Holders with FWC-issued Special Use Vehicle Permit Certificates shall be driven down firebreaks or unmarked trails to be dropped off and/or picked up from his/her declared hunting location. Vehicles shall not be parked off-road on firebreaks or unmarked trails; vehicles shall be returned to and parked on named roads as designated on the official PRA map.

8.5.12 MRA Specific Vehicle Use Instructions

Vehicles must be operated only on roads designated on the current year's Military Recreation Area Map and parked in areas as designated on the current year's MRA map.

9. REGULATIONS

9.1 General

APAFR is a designated Wildlife Management Area with the Florida Fish and Wildlife Conservation Commission (FWC). All APAFR hunting and fishing season dates are set within federal and state frameworks established annually. **All applicable federal and state wildlife regulations apply.** For exact wording of the state wildlife laws and regulations, see the Florida Fish and Wildlife Conservation Commission's Florida Statute and Administrative Code which is on file with the Secretary of State and state libraries (flrules.org). Season dates and season specific regulations (Appendices 2 and 3).

- 9.1.1. The possession of remote-controlled aircraft or drones is strictly prohibited.
- 9.1.2. The possession of fireworks is strictly prohibited. Nothing shall leave the ground.
- 9.1.3. The use or possession of metal detectors is strictly prohibited.
- 9.1.4. Digging and/or all forms of ground disturbance are strictly prohibited.
- 9.1.5. Horses are prohibited, unless authorized by the Installation Commander or designee.
- 9.1.6. Spotlighting is prohibited, unless authorized by the Installation Commander or designee.
- 9.1.7. Consumption of alcohol will be limited to campgrounds only. State laws regarding transportation and consumption of alcohol apply.
- 9.1.9. No ordnance or any other military material shall be tampered with, handled, or removed from the installation. Areas where suspected unexploded ordnance (UXO) is found must be vacated immediately, and the location reported to Outdoor Recreation Program personnel.
- 9.1.10. No one shall tamper with or remove any equipment, supplies or materials not placed by the individual or without written permission of the owner of the equipment.

- 9.1.11. Only dead and downed wood may be cut and collected as firewood and used only at Avon Park Air Force Range. Firewood brought onto the installation shall be burned or removed from the property upon departure.
- 9.1.12. Gates found in a condition other than that of which the gate was left by staff may subsequently be locked without notice.
- 9.1.13. Hunting, fishing, and outdoor recreation is prohibited on any portion of the installation posted as closed to those activities.
- 9.1.14. People, dogs, vehicles, and other recreational equipment are prohibited in areas posted as “Closed to Public Access” by U.S. Air Force administrative action.
- 9.1.15. All fires are prohibited, except as stated in section 9.2.1.1.
- 9.1.16. Unethical behavior will result in the loss of recreational privileges.
- 9.1.17. Permit Holders shall be barred from the installation for posting, publishing, or distributing any information or photos deemed sensitive to the military mission to any websites, forums, or social media platforms. This includes, but is not limited to, information regarding military training operations, photos of military activities, personnel, or equipment and/or names of individuals involved in military training operations.
- 9.1.18. Killing or attempting to kill or wound endangered or threatened species, or species of special concern, is prohibited. Capturing, harming, harassing, or possessing, any protected species or their nests, eggs, or parts thereof, is prohibited. Current listings of these species can be obtained at the Outdoor Recreation Office.
- 9.1.19. Taking or possessing any snakes, including venomous snakes, is prohibited.

9.2. Recreation

9.2.1. Camping

- 9.2.1.1 No campfires shall be left unattended. All fires shall be contained. All fires shall be extinguished (cold) before being left unattended. Fire bans shall be observed when in effect.
- 9.2.1.2. Campground quiet hours are 23:00 – 04:30. People and/or their dogs creating excessive noise or exhibiting other behaviors that disturb other campers shall be removed from the installation. Generators may be used 24-hours a day.
- 9.2.1.3. No camping will be allowed within 25 feet of a picnic pavilion, pump, latrine, or shower facility.

9.2.1.4. No camping, vehicles or trailers will be allowed within 25 feet of a body of water in any campground.

9.2.1.5. All trash shall be properly disposed of in the dumpsters provided at Building 600. The dumpsters are for trash generated at campsites. Dumpsters shall not be utilized for the disposal of any hazardous waste.

9.2.1.6. Emptying gray water and septic tanks from campers into the porta-potties is prohibited.

9.2.1.7. Vehicles may not be stored in any campground. A single tent, camper or trailer may be stored, but any storage of fuel or other flammable liquid is prohibited except for butane or propane in certified tanks up to a max total of 40lbs per trailer/camper.

9.2.1.8 PRA Specific Camping Regulations

9.2.1.8.1 Willingham, Morgan Hole, and Fort Kissimmee Campgrounds are the only designated campgrounds for PRA Permit Holders. Campground boundaries are delineated on the map (Appendix 5) and marked with signs in the field. Camping spots are first come, first serve; reserving spots is prohibited.

9.2.1.8.2. Generators are only allowed in Willingham Campground west of Frostproof Road, Morgan Hole Campground north of Kissimmee Road, and Fort Kissimmee Campground north of the boat landing.

9.2.1.8.3 All campers and camping equipment must be removed from the Range when recreation closes each weekend. With the following exception: PRA Permit Holders may store a single tent, camper and/or a single trailer in Morgan Hole or Willingham Campground for the duration of General Gun, Small Game and/or Spring Turkey Seasons, for an additional fee per camper/trailer per hunt season (see Appendix 4). Campers shall be brought in no more than one week before the start of a hunt season and removed no later than one week after the hunt season ends, or as authorized by the Installation Commander.

9.2.1.9 MRA Specific Camping Regulations

9.2.1.9.1. Austin Hammock Campground is the only designated campground for MRA Permit Holders. Campground boundaries are delineated on the MRA map and marked with signs in the field.

9.2.1.9.2. MRA Hunt Permit Holders may store a single tent, camper and/or a single trailer at Austin Hammock campground from for an additional fee per camper/trailer. Campers shall be brought in no more than one week before the start of Muzzleloader Season and removed no later than one week after Spring Turkey Season ends, or as authorized by the Installation Commander.

9.2.2 Fishing

9.2.2.1. Motorized vessels are prohibited in any marsh on Avon Park Air Force Range at any time, unless otherwise authorized by the Installation Commander or designee. Motorless vessels are allowed in marshes only during Migratory Bird Season.

9.2.2.2. Aggressive alligators shall be reported to Outdoor Recreation staff.

9.2.2.3. Trotlines and brush hooks are prohibited.

9.2.2.4 PRA Specific Fishing Regulations

9.2.2.4.1. Permit Holders may fish any body of water that is accessible in an open PRA Management Unit.

9.2.2.4.2. Boats are restricted to a maximum engine size of ten horsepower on Tomlin Hammock Lake. Gas or electric trolling motors may be used.

9.2.2.4.3. Airboats may be trailered across Avon Park Air Force Range to the Kissimmee River boat ramp. Airboats shall only be launched at the Kissimmee River boat ramp.

9.2.2.4.4. Daily and possession bag limits will follow FWC regulations. With the following exception: Catfish are catch and release only between April 15 and June 15 annually at Van Eeghan Ponds 1, 2, 3 and Tomlin Hammock Lake. These fish are stocked and fed to gain size prior to the Youth Fishing Derby.

9.2.2.5 MRA Specific Fishing Regulations

9.2.2.5.1. MRA Permit Holders may fish the Rim Canal, Arbuckle Creek behind “C.E.” and “Austin Hammock” Management Units and the Lake Arbuckle boat ramp adjacent to the Main Gate during the allocated period for their permit.

9.2.2.5.2 Persons interested in utilizing the Lake Arbuckle Boat Ramp that meet the criteria outlined in Section 6.1.2.2. that do not have a MRA permit, shall obtain a boat ramp placard. APCI spouses, dependents and Retired APCI are also eligible. All Military Recreation Area permit holders are exempt from the Arbuckle Boat Ramp Placard requirement.

9.2.2.5.3 Airboats shall not access Lake Arbuckle from Avon Park AFR property.

9.2.2.5.4. No more than one vessel or two kayaks shall be permitted per person at the Lake Arbuckle boat ramp.

9.3 Hunting

9.3.1 General

- 9.3.1.1. All harvested animals shall be checked in at the Outdoor Recreation Office (Building 600) with Outdoor Recreation staff. A self-check form will be made available for game harvested after hours or when Outdoor Recreation staff are unable to check in game. White-tailed deer and Turkey shall also be reported to FWC per state regulations.
- 9.3.1.2. If harvested game are self-checked Permit Holders checking game will be responsible for making all biological measurements as indicated on the self-check forms available. Permit Holders are also responsible for extracting a jawbone on all white-tailed deer harvested; For those wishing to have their game mounted jaw bones must be returned to Outdoor Recreation before April 30th of the permit year.
- 9.3.1.3. Field dressing of harvested game is strictly prohibited. Any processing of game or wildlife shall be done at the Outdoor Recreation office.
- 9.3.1.4. Hunting equipment is prohibited except seven days prior to the opening of Archery Season until seven days following the close of any hunt season. All traces that hunting equipment was present shall also be removed (i.e., flagging tape, markers, etc.).
- 9.3.1.5. Tree stands or blinds are limited to three per person and shall be in good working condition to provide a safe environment from which to hunt. All stands/blinds shall be labeled with the owner's Permit number so that the owner may be contacted by staff. Ladder stands shall be labeled by attaching tag at eye level. All tree stands are subject to random checks and shall be confiscated by Outdoor Recreation if deemed unlabeled.
- 9.3.1.6. No tree stands or ground blinds are permitted within 100 feet of a white banded tree.
- 9.3.1.7. No hunting activity or equipment is allowed within 100 feet of an impact area.
- 9.3.1.8. In the case of conflict between Permit Holders concerning tree stand or ground blind placement, if a resolution cannot be reached, all parties will be moved to different Management Units.
- 9.3.1.9. Tree stand placement is first come, first served. The earlier placement of trail cameras or flagging tape does not reserve a hunting spot. Reserving of spots is prohibited.
- 9.3.1.10. A Fall Arrest System / Full Body Harness is required. The Fall Arrest System or Full Body Harness shall be worn and properly attached to the tree at all times while the tree stand is in use.
- 9.3.1.11. A short tether shall be maintained between the tree and the Permit Holder with no slack while in the seated position.
- 9.3.1.12. A haul line shall be used to raise/lower equipment. Firearms shall be unloaded and pointed away from the Permit Holder while being hauled up the tree stand.

9.3.1.13. Permit Holders shall ensure they have a Fall Rescue, Relief and Recovery Plan in case of emergency. Prolonged suspension from a harness can be fatal.

9.3.1.14. Permit Holders using ladder stands shall maintain three points of contact with the ladder stand at all times. Permit Holders using climber stands shall have a connector strap and be connected to the tree at all times. Permit Holders using hang-on stands shall secure the tether at eye level or above. Proper procedures to utilize hang-on stands (accessing the platform from above) shall be observed.

9.3.1.15. Permit Holders shall inspect his/her tree stand(s) and Fall Arrest System each time prior to climbing the stand.

9.3.1.16. Game shall be hunted from one half-hour before sunrise until one half-hour after sunset, except during Spring Turkey Season. Legal hunting hours for Spring Turkey are one half-hour before sunrise until 1300 hours.

9.3.1.17. All personal possessions shall be removed from the installation at the end of each weekend, unless otherwise specified. The U.S. Air Force is not liable for the loss or vandalism of any items or equipment brought onto the installation. Unauthorized items left behind will be confiscated.

9.3.1.18. A group of three or more people on foot shall not concentrate, drive, rally, or stir up game, except for Small Game only season (see Appendix 2).

9.3.1.21. MRA Specific General Regulations

The MRA has permanent tree stands available for public use except in unit 14. These public stands shall be marked with orange paint. Public stands are first come, first served.

9.3.2. Youth events

9.3.2.1. All Youth Hunt events (Deer Hunt, Gator Hunt, Spring Turkey Hunt) are open to dependents and/or non-dependents (grandchildren, nieces/nephews, etc.) of current Hunt Permit Holders.

9.3.2.2. Participants of the Youth Hunt events are required to register as per instructions from the Outdoor Recreation Office. All non-dependents of Hunt Permit Holders require a signed and notarized Parental Consent Form.

9.3.2.3. Participants of the Youth Deer and Spring Turkey Hunts shall be 15 years of age or younger at the time of the event.

9.3.2.4. Participants of the Youth Alligator Hunt shall be between 12 and 15 years of age at the time of the event.

9.3.2.5. Participants of the Youth Fishing Derby are required to register with the Outdoor Recreation Office on the day of the Derby, or as instructed. Participants shall be 15 years of age or younger.

9.3.3. Permissible firearms and weapons

9.3.3.1. Permissible firearms and weapons shall follow state statutes, with the following exceptions:

9.3.3.1.1. During Archery Season, only archery equipment may be brought onto the installation. Longbows, crossbows, and recurve bows shall have a minimum draw weight of 30lbs. Arrows used to take deer, turkey or hogs shall be equipped with broadheads having a minimum width of 7/8 inches. Pistols of any kind are prohibited.

9.3.3.1.2. During General Gun and Small Game Seasons, only the following are allowed: shotguns, archery equipment including crossbows, muzzleloading firearms, rim-fire rifles (maximum velocity 1300 fps), and pistols. Refer to Glossary of Terms for a definition of a pistol.

9.3.3.1.3. During Spring Turkey Season, the following firearms are allowed: shotguns using Number 2 or smaller diameter shot. Archery equipment and crossbows are also permitted as stated in section 9.3.3.1.1. Hunting hours end at 1300.

9.3.3.1.4. During Limited Entry Dog Hunts, permissible firearms will follow General Gun Season (para 9.3.3.1.2.) unless otherwise stated by the Program Manager.

9.3.3.2. Centerfire rifles and fully automatic firearms are prohibited.

9.3.1.3. Only Hunt Permit Holders, underage children under direct control of a Hunt Permit Holder, and Hunt Guests of Hunt Permit Holders, shall possess firearms or archery equipment during the appropriate season. The possession of any type of firearm or archery equipment by any individual outside of the posted hunting season is prohibited, unless specifically authorized by the installation commander.

9.3.3.4. No person shall carry a concealed weapon (even with a permit) while on Avon Park AFR property.

9.3.3.5. All firearms, including crossbows, shall be unloaded, completely empty of ammunition, while at the Outdoor Recreation Office or any campground.

9.3.3.6. When transporting all firearms, including crossbows, in vehicles, firearm(s) must not have a projectile in the chamber, cylinder, or have a loaded projectile container (such as a clip or magazine) inserted in the weapon.

9.3.3.7. A firearm, regardless of any caliber or draw weight, shall not be fired from a moving vehicle or from inside the cab of a stationary vehicle.

9.3.3.8. A firearm shall not be discharged across or into any boundary lines of any impact area or area closed to public access, or from or across any roadway designated on the Public or Military Recreation Area map, and/or within fifty (50) feet of Kissimmee Road.

9.3.3.9. The discharge of firearms or the use of archery equipment is prohibited within 200 yards of the marked boundary of any designated public campsite.

9.3.3.10. Target practice is prohibited throughout the installation.

9.3.3.11. Firing ranges on this installation are not open to any Permit Holders.

9.3.3.12. Pre-charged pneumatic air guns are prohibited.

9.3.3.13 MRA Specific Permissible firearms and weapons Regulations

The L.H. Thomas Unit is limited to archery equipment only, as outlined in paragraph

9.3.3.1.1. All other firearms are prohibited in this unit.

9.3.4. General use of dogs

9.3.4.1. All dogs brought onto AF property shall wear a collar bearing the name and telephone number and address of the owner.

9.3.4.2. Permit Holders are responsible for maintaining up-to-date rabies vaccinations for their dog(s) from a certified veterinarian or pet clinic. Permit Holder shall produce, upon request, proof of vaccination in the form of a signed vaccination certificate from the veterinarian or pet clinic; purchase receipts and/or self-administered vaccinations will not be accepted proof of vaccination.

9.3.4.3. Dogs shall be under physical restraint at all times, including dogs used for tracking wounded game, except when authorized for the use of taking game. Permit holders shall obtain authorization from the Outdoor Recreation Office before using dogs to track wounded game.

9.3.4.4. All Permit Holders who have lost dogs shall report this information to the Outdoor Recreation Office immediately. Permit Holders shall make every effort to locate lost dogs before leaving the installation.

9.3.4.5. Dogs are allowed in all campgrounds. It is the responsibility of the dog owner to control his/her dogs at all times. Dogs creating disturbances in campgrounds shall be removed from the installation if requested by the Outdoor Recreation Office or Law Enforcement.

9.3.4.6. In all cases, Permit Holders are responsible for all actions of their dog(s).

9.3.4.7. No person shall knowingly or negligently allow any dog to pursue or molest any wildlife during any period in which the taking of such wildlife using dogs is prohibited.

9.3.4.8. The training of hunting dogs is prohibited, except during hunting seasons where dogs are already allowed.

9.3.4.9 The use of dogs to take or pursue game during Spring Turkey Season is prohibited.

9.3.4.10 No dogs shall run loose between sunset and sunrise, unless authorized by the Installation Commander.

9.3.4.11. PRA Specific Dog Regulations

9.3.4.11.1 Dogs used to pursue game during Small Game and Migratory Bird Seasons are limited to no more than five (5) bird dogs and/or retrievers per hunter. All other Small Game hunters shall utilize Dog Units A, B and C (see Appendix 5) during the overlap with General Gun Season.

9.3.4.11.2 Permit Holders may hunt waterfowl and snipe with dogs in Kissimmee Marsh in Management Unit 10A and Arbuckle Marsh in Management Units 13 and 14 during the overlap with General Gun Season.

9.3.4.12 MRA Specific Dog Regulations

9.3.4.12.1 The use of dogs to take or pursue white-tailed deer and wild hogs is prohibited at all times on the Military Recreation Area.

9.3.4.12.2 The use of dogs to take or pursue legal game during Small Game and Migratory Bird season is permitted only after receiving verbal authorization from the Outdoor Recreation Office. MRA Hunt Permit Holders are limited to no more than five (5) bird dogs and/or retrievers.

9.3.4.12.3 Permit Holders may hunt waterfowl and snipe with dogs in Arbuckle Marsh in Management Units 14, during the overlap with General Gun Season.

9.3.5. Limited Entry Quota Hunts with Dogs (PRA ONLY)

9.3.5.1. Limited entry quota hunts are authorized by the Installation Commander during which dogs may be used for the pursuit and take deer and wild hog in two of the three Dog Units (see Appendix 5). If either of the chosen two units are closed due to mission activity the third unit will be used as an alternate. These units will be on an annual rotation to avoid over hunting. During the scheduled dog hunt weekends, only participants in the Dog Hunts and Small Game hunters shall hunt in the established Dog Units. All other Hunt Permit Holders may hunt in the remaining PRA Management Units.

9.3.5.2. Up to 120 dog-only hunt permits shall be sold on a first come, first serve basis at <https://avon.isportsman.net>. If less than 60 dog hunters are registered, then the area may be reduced for the following permit year.

9.3.5.3. All permit holders participating in the Limited Entry Dog Hunts shall complete the special briefing before purchasing a Limited Entry Dog Hunt permit. All dogs will be accounted for before the hunt, to include verification of rabies vaccination paperwork, GPS and behavioral correction collars, and a total count of dogs. Spot checks by staff or FWC may occur.

9.3.5.4. All wild hogs captured during a limited entry quota hunt, if permitted shall be harvested. No hogs shall be released.

9.3.5.5. All other regulations apply to limited entry quota hunts.

10. OUTDOOR RECREATION

10.1. APAFR has no Class I developed recreational areas that are run by the Outdoor Recreation Program.

10.2. APAFR has two separate Class II dispersed recreational areas (PRA and MRA) as described in section 6.1.

10.3. APAFR has many Class III special-interest areas that are not administered by the Fish, Wildlife, and Outdoor Recreation Program. Their management is addressed elsewhere in the INRMP.

10.4. Public Access for Outdoor Recreation.

10.4.1. Class I: N/A

10.4.2. Class II (PRA and MRA): Refer to sections 8 and 9.

Michael S. Ryan, Lt Col, USAF
Commander, 598 Range Squadron

1. APPENDICES

Appendix 1: Glossary of References and Terms

References:

44 U.S.C., Section 3101
Executive Order 9397, 24 Nov 43.
AFI 32-7064, Integrated Natural Resources Management
16 U.S.C., Sections 670a-670f
Executive Order 13443
Department of Defense Instruction 4715.03
APAFR Volunteer Program Operating Instruction.

Terms:

Class I areas (developed recreation areas) - areas that contain facilities designed to accommodate intensive recreational activities such as sports fields, campgrounds, picnic areas, paved walking/jogging/ cycling trails, winter sports areas, marinas, developed swimming beaches, and other water sports areas.

Class II areas (dispersed recreation areas) - areas that are suitable to support dispersed recreational activities such as hunting, fishing, primitive camping, bird watching, boating, hiking, and sightseeing.

Class III areas (special interest areas) - areas that contain valuable archeological, botanical, ecological, geological, historic, zoological, scenic, or other features that warrant special protection and access control. Class III areas will emphasize the protection of the unique resources. Public use, to include interpretive displays and education programs, will be permitted as specified in the INRMP.

Airboat – Any boat, sled, sea skiff or swamp boat pushed, pulled or propelled by airpower generated by a motor of more than 25 horsepower.

Air Force Prime Contractor – Contractors working for the Air Force on the APAFR with a minimum contract length of five years.

All-terrain vehicle (ATV) – An engine-powered vehicle with wheels or tracks of less than a 60-inch wheelbase measured from the center of the forward wheel or hub to the center of the rearmost wheel or hub.

Amphibians – All members of the class Amphibia (for example frogs, toads, mudpuppies, newts and salamanders).

Antlered deer – Any deer having one or more antlers at least five inches in length visible above the hairline.

Antlerless deer – Any deer, except a spotted fawn, that is without antlers or whose antlers are less than five inches in length visible above the hairline.

Antler point – Any antler projection that is at least one inch in length.

Archaeological resources - Archaeological resources on the Range are protected by the Archaeological Resources Protection Act (ARPA) of 1979 (Public Law 96-95; 16 U.S.C. 470 aa-mm) as amended. Removal of protected materials is punishable by a fine of \$10,000.00 and/or 1 year in federal prison for the first offence. A fine of \$100,000.00 and/or five years in federal prison are the punishments for the second and other subsequent offenses. Additionally, any equipment and vehicles used in the removal of archaeological materials shall be confiscated.

Archaeological resources are defined in ARPA as “any material remains of past human life or activities that are of archaeological interest.”

Bicycle - a vehicle propelled solely by human power, having two tandem wheels, and including any device generally recognized as a bicycle though equipped with two front or two rear wheels. The term does not include such a vehicle with an electric or gas-powered motor, with a seat height of no more than 25 inches from the ground when the seat is adjusted to its highest position, or a scooter or similar device.

Companion - limited to include spouses, common law marriages, fiancés, fiancées, and significant others.

Dependent - Individual less than 18 years of age on September 1st of the permit year accompanying an APAFR permit holder (host). This individual can be either a legally dependent child or a child with a signed parental-consent form.

Direct control - being within visual or voice range (electronic communication is acceptable if hunting in the same management unit).

Firearm - Shotgun, rifle, pistol, revolver, gas gun, blow gun, bow, crossbow, or any other device mechanically propelling an arrow, spear, or other projectile.

Furbearers – Racoons, opossum, skunk, nutria, beaver, coyote, fox, mink, weasel and round tailed muskrat.

Guest - Individual that is 18 years or older on September 1st of the permit year accompanying an APAFR permit holder (host).

Hunting - The lawful pursuit, trapping, shooting, capture, collection, or killing of wildlife or the lawful attempt to pursue trap, shoot or capture, collect, or kill wildlife, regardless if such actions result in obtaining possession of such wildlife.

Hunting Equipment- Tree-stands and ground blinds.

Legal game – Game birds, game mammals and crows established for each species by Rule 68A-13.003, 68A-13.004 or 68A-13.008, F.A.C., and non-protected birds, non-protected mammals, and wild hogs unless otherwise stipulated for a particular species in a regulation established in FAC, 68A-15.061(12).

Loaded Firearm – firearm with any ammunition in the chamber or magazine, a muzzleloader with a firing cap or primer in place, a nocked arrow on a bow, or a nocked bolt on a crossbow.

Migratory game birds – Ducks, geese, brant, rail or marsh hen, coot, common moorhen, snipe, woodcock, and doves.

Moped or Motorized bicycle- Any two or three wheeled device powered by human propulsion or an electrical energy and an automatic transmission. Additionally, a motor that produces less than two gross brake horsepower, propels a device at a maximum speed of not more than 30 miles per hour on level ground, and has a maximum engine size of 49 cubic centimeters. A moped only refers to motor vehicles both clearly defined by and authorized in traffic by applicable traffic codes and laws.

Permanent blind – anything that provides shelter, cover or a place of concealment for a person, but does not include rooted vegetation or a shelter cover or place of concealment remaining in place while the permit holder is not present.

Pistol – firearm designed to be held and fired using a single hand, having a maximum barrel length of 9 inches or less, and having a magazine inserted into the grip, or in the case of revolvers, cartridges inserted into the cylinder.

Possession – The word “possession” whenever used in these rules shall mean any one of the following:

- a) Manual possession.
- b) Physical possession.
- c) Control or custody.
- d) Possession in one’s clothing, attire or equipment.
- e) Possession in or about a vessel, vehicle or beast of burden under one’s custody or control, including but not limited to compartments, drawers, pockets, trunks, and similar places in and about such vessel, vehicle, or beast of burden.

Potentially lethal projectile - is defined as any projectile launched from any firearm, bow, crossbow, or similar tensile device.

Roadway – That portion of a highway improved, designed, or ordinarily used for vehicular travel, exclusive of the berm or shoulder.

Small game – game species other than deer, bear, or wild turkey.

Take – The term shall include taking, attempting to take, pursuing, hunting, molesting, capturing, or killing any wildlife or freshwater fish, or their nests or eggs by any means, regardless if such actions result in obtaining possession of such wildlife or freshwater fish or their nests or eggs.

Wildlife – All wild or non-domestic birds, mammals, fur-bearing animals, reptiles and amphibian

Appendix 2: PRA Hunt Season Dates

Tentative 2023 – 2024 hunting season date for the Avon Park Air Force Range Public Recreation Area. These dates are subject to change due to military missions or updated biological information.

SEASON	SEASON DATES	EXPECTED GATE TIMES
Archery	16 Sep – 20 Oct 2023 50 Doe Quota	05:30 – 19:30
Muzzleloader	21 Oct – 03 Nov 2023	05:30 – 19:00
General Gun	04 Nov 2023 – 21 Jan 2024 or 150 bucks harvested whichever comes first	05:00 – 19:00
Limited Entry Dog Hunts	TBD	05:00 – 19:00
Small Game	11 Nov 2023 – 03 Mar 2024	05:00 – 19:00 05:30 – 18:30 (Jan 2024)
Youth Spring Turkey Hunt	09 – 10 Mar 2024	05:00 – 19:00
Spring Turkey	16 Mar – 21 Apr 2024	06:00 – 20:00

A2.1. Any hunt season may end early once the harvest quotas have been met for that season/species.

A2.2. As harvest quota limits approach, this may be restricted to four (4) points on one side to extend the hunt season as long as possible. The Outdoor Recreation Office will advise all Permit Holders one (1) week prior to increasing restrictions on legal bucks.

A2.3. For Archery Season, the definition of “antlerless deer” will follow State regulations.

A2.4. Migratory Bird Season shall follow the season dates as published at <https://myfwc.com/regulations/hunting/birds/> for Zone C, with the following exceptions:

Exception 1: Migratory Bird Season is prohibited during the overlap with Archery and Muzzleloader Seasons.

Exception 2: Snipe Season shall run concurrent with Small Game Season, except as stated in paras 9.3.4.11.2. and 9.3.4.12.3. Snipe Season ends 15 Feb 2024.

A2.4. During Small Game Season, the use of dogs to pursue and take wild hogs, rabbits and coyotes is prohibited, unless authorized by the Installation Commander.

Appendix 3: MRA Hunt Season Dates

Tentative 2023 – 2024 hunting season dates for the Avon Park Air Force Range Military Recreation Area. These dates are subject to change due to military missions or updated biological information.

SEASON	SEASON DATES	EXPECTED GATE TIMES
Archery	16 Sep – 20 Oct 2023	05:30 – 19:30
Muzzleloader	21 Oct – 03 Nov 2023	05:30 – 19:00
Fall Turkey	04 Nov – 31 Dec 2023	05:00 – 19:00
General Gun	04 Nov 2023 – 21 Jan 2024	05:00 – 19:00
Small Game	11 Nov 2023 – 03 Mar 2024	05:00 – 19:00 05:30 – 18:30 (Jan 2024)
Youth Spring Turkey Hunt	09 – 10 Mar 2024	05:00 – 19:00
Spring Turkey	16 Mar – 21 Apr 2024	06:00 – 20:00

A3.1. Any hunt season may end early once the harvest quotas have been met for that season/species.

A3.2. As harvest quota limits approach, this may be restricted to four (4) points on one side to extend the hunt season as long as possible. The Outdoor Recreation Office will advise all Permit Holders one (1) week prior to increasing restrictions on legal bucks.

A3.3. For Archery Season, the definition of “antlerless deer” will follow State regulations.

Appendix 4: Permit Fees

A4.1 Hunt Permit Fees

HUNT PERMITS	
B1. PRA HUNT PERMITS	
Allow the Permit Holder to hunt (including participation in Limited Entry Dog Hunts), fish, camp, or engage in any allowed recreational activity. Hunt & Companion Hunt Permit Holders may bring in up to three (3) children under the age of 18 free of charge; only one (1) child may carry a firearm while hunting in this manner. Additionally, Hunt & Companion Hunt Permit Holders may bring in one (1) Hunt Guest per weekend.	
PRA ANNUAL HUNT PERMIT	\$425 <small>(Early Bird Pricing)</small>
PRA COMPANION HUNT PERMIT <small>(requires validation – contact Outdoor Recreation staff to unlock)</small>	\$525 <small>(Regular Pricing)</small>
PRA ANNUAL HUNT PERMIT	\$250 <small>(Early Bird Pricing)</small>
PRA COMPANION HUNT PERMIT <small>(requires validation – contact Outdoor Recreation staff to unlock)</small>	\$350 <small>(Regular Pricing)</small>
B2. PRA MILITARY-DISCOUNTED HUNT PERMITS	
Available to eligible Active Duty and Retired Military personnel and their spouses or significant others. These Permits allow Permit Holders all activities as outlined in para B1.	
PRA ACTIVE DUTY DISCOUNTED HUNT PERMIT <small>(requires validation – contact Outdoor Recreation staff to unlock)</small>	\$170
PRA RETIRED MILITARY DISCOUNTED HUNT PERMIT <small>(requires validation – contact Outdoor Recreation staff to unlock)</small>	\$300
PRA COMPANION MILITARY DISCOUNTED HUNT PERMIT <small>(requires validation – contact Outdoor Recreation staff to unlock)</small>	\$75
B3. MRA HUNT PERMITS	
See para A8.1. and A8.1.1. for eligibility. These Permits allow Permit Holders all activities as outlined in para B1.	
MRA ANNUAL HUNT PERMIT <small>(requires validation – contact Outdoor Recreation staff to unlock)</small>	\$30
MRA COMPANION HUNT PERMIT <small>(requires validation – contact Outdoor Recreation staff to unlock)</small>	\$10
B4. PURPLE HEART HUNT PERMITS	
Available to Purple Heart Recipients and their spouses or significant others. These Permits allow Permit Holders all activities outlined in para B1., but allow access to both Public and Military Recreation Areas under one Permit.	
PURPLE HEART HUNT PERMIT <small>(requires validation – contact Outdoor Recreation staff to unlock)</small>	FREE
PURPLE HEART COMPANION PERMIT <small>(requires validation – contact Outdoor Recreation staff to unlock)</small>	\$45

LIMITED ENTRY DOG HUNT PERMITS

B5. PRA DOG HUNT PERMITS

Allows the Permit Holder to participate in three (3) weekends of deer dog hunts and four (4) weekends of hog dog hunts in the specified PRA Dog Hunt Units.

PRA DOG HUNT ENDORSEMENT

(available to current PRA Hunt & Companion Hunt Permit Holders only)

FREE

PRA DOG HUNT ONLY PERMIT

(valid only for scheduled Limited Entry Dog Hunts; this Permit does not allow Hunt Guests)

\$350

A4.2. Recreation Permit Fees

NON-HUNT RECREATION PERMITS

B6. RECREATION PERMITS

Allows the Permit Holder to fish, camp, hike, or engage in any allowed recreational activity, with the exception of taking wildlife. However, a Recreation Permit Holder may ride in a vehicle with a Hunt Permit Holder. Recreation Permit Holders may bring in up to three (3) children under the age of 18 free of charge. Recreation Permit Holders may not bring in Hunt Guests at any time.

Recreation is restricted to the Kissimmee River boat ramp, the Van Eeghan fish ponds and Tomlin Hammock Lake, and Willingham, Morgan Hole, and Fort Kissimmee Campgrounds, during the duration of Archery, Muzzleloader and General Gun hunting seasons.

PRA ANNUAL RECREATION PERMIT

(this Permit takes the place of the PRA Companion Non-Hunt Permit)

\$50

PRA WEEKEND RECREATION PERMIT

(available after General Gun season ends; purchase Mondays - Thursdays; valid until picked up)

\$25

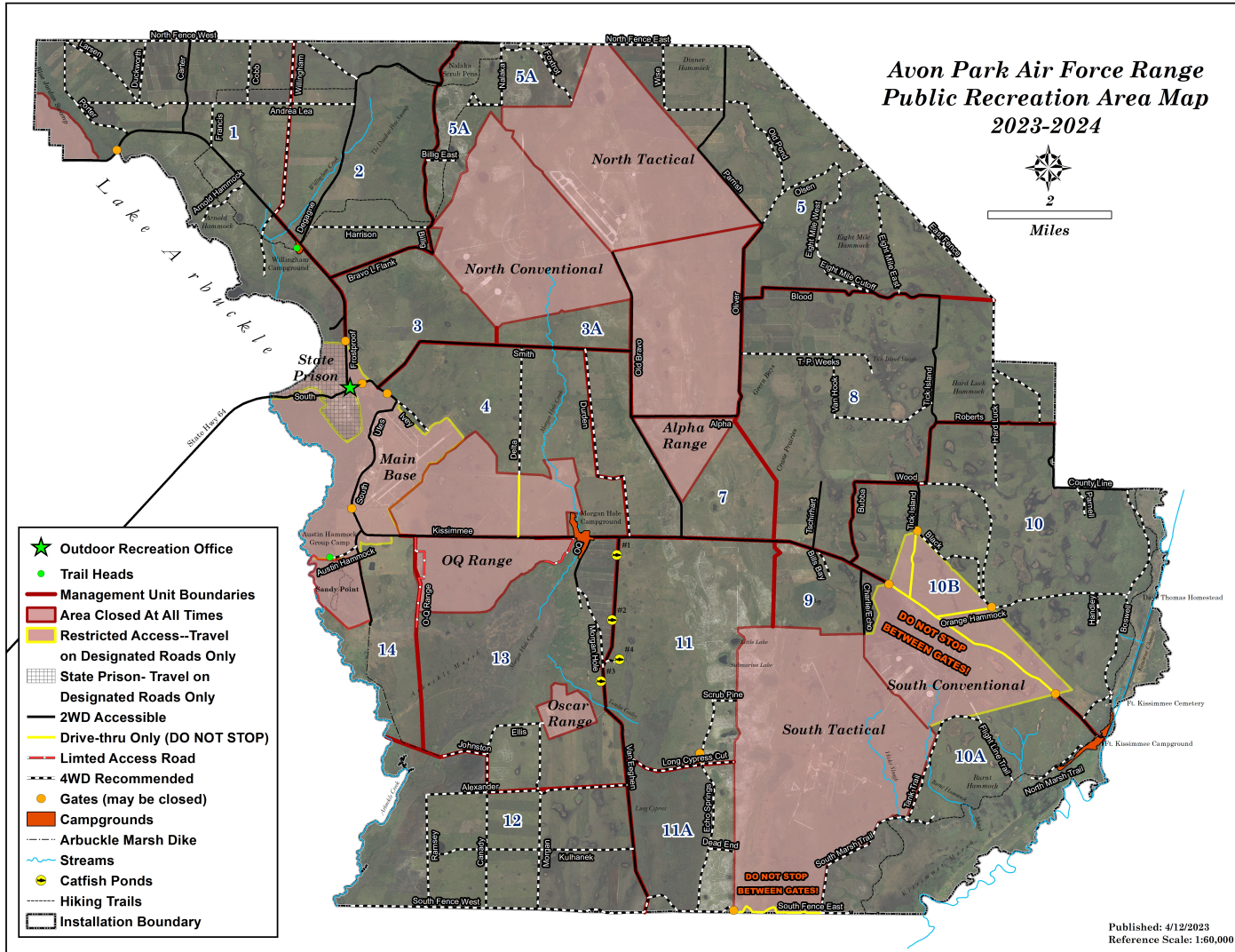
A4.3. Hunt Guest Permit Fees

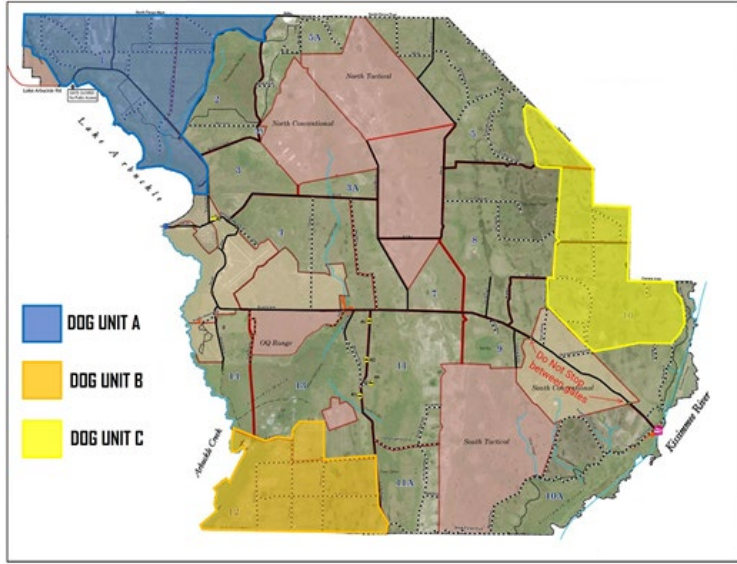
GUEST PERMITS	
<p>B7. HUNT GUEST PERMITS</p> <p>Allows the Permit Holder to hunt, fish, camp, or engage in any allowed recreational activity, while under the direct control of a current Hunt or Companion Hunt Permit Holder. Direct control is herein defined as being within visual or voice range (electronic communication is acceptable if hunting in the same Management Unit). Failure to properly escort and supervise any Hunt Guest will result in the suspension of privileges of the Hunt Guest and the host Permit Holder.</p> <p>Hunt Guest Permits shall NOT be purchased by a Hunt or Companion Hunt Permit Holder on behalf of his/her Guest. Hunt Guest Permits are available for purchase Mondays – Thursdays; see below for exceptions.</p>	
<p>PRA HUNT GUEST PERMIT</p>	
<ul style="list-style-type: none"> • unavailable opening weekends of each hunt season & first four (4) weekends of Spring Turkey season • Hunt Guests must share a vehicle with their host Hunt Permit Holder • Hunt Guest Permits are valid for one (1) weekend per purchase, up to a maximum of three (3) weekends during a single permit year • Hunt Guests are valid until picked up, except on opening weekends as outlined above 	<p>\$75</p>
<p>MRA HUNT GUEST PERMIT</p>	
<ul style="list-style-type: none"> • MRA Hunt Guest Permits are valid for one (1) week from the date of purchase, up to a maximum of fifteen (15) weeks during a single permit year • MRA Hunt Guest Permits are valid until picked up 	<p>\$10</p>

A4.4. Camper Storage Fees

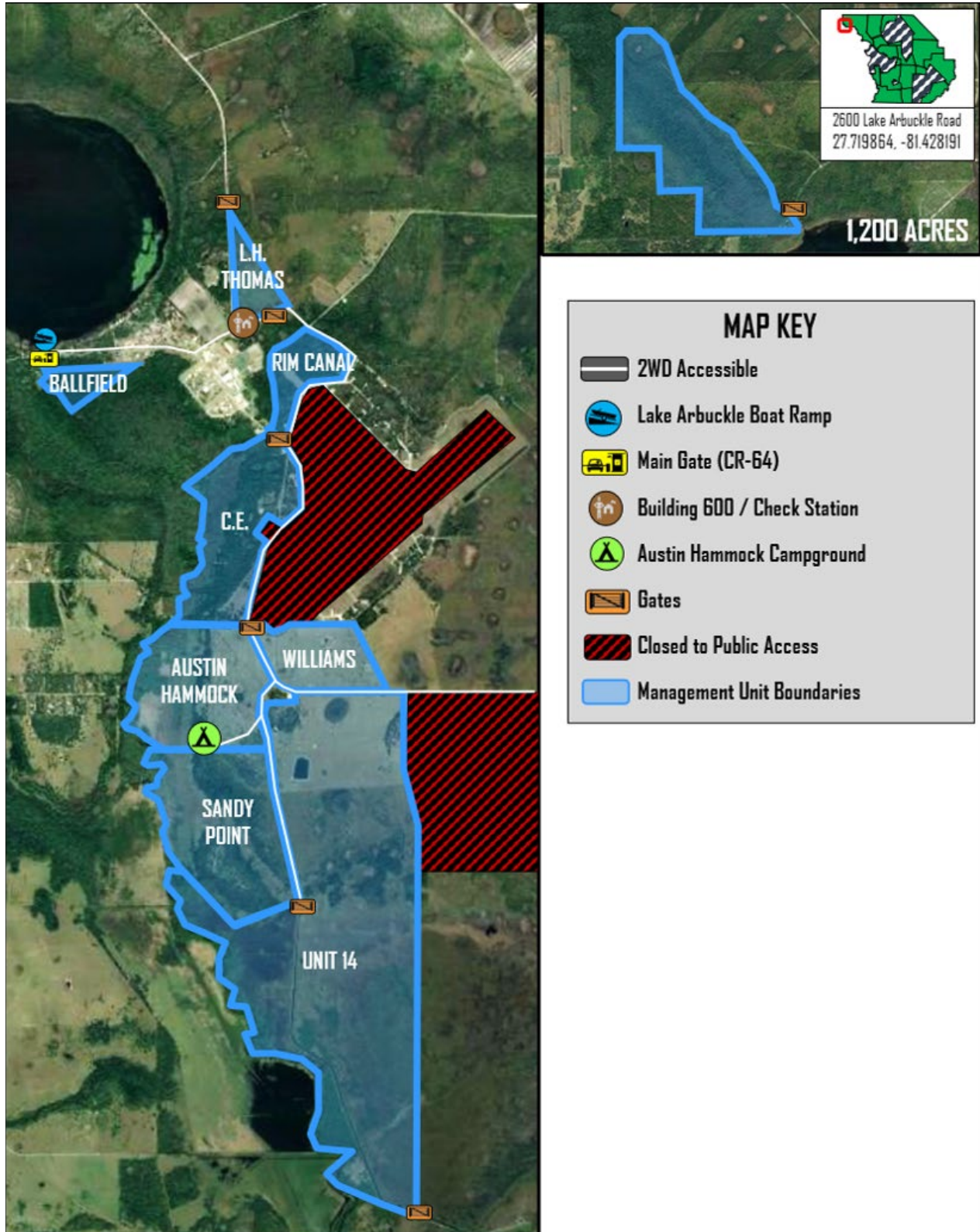
CAMPER STORAGE FEES	
<p>PRA CAMPER STORAGE</p> <p>Allow the Permit Holder store a single camper and/or trailer at Willingham or Morgan Hole Campgrounds for the duration of General Gun, Small Game and Spring Turkey Seasons, for an additional fee per camper/trailer per hunt season.</p>	
<p>GENERAL GUN CAMPER STORAGE</p>	<p>\$100 per camper/trailer</p>
<p>SMALL GAME CAMPER STORAGE</p>	<p>\$100 per camper/trailer</p>
<p>SPRING TURKEY CAMPER STORAGE</p>	<p>\$100 per camper/trailer</p>
<p>ALL SEASON CAMPER STORAGE <i>(allows camper storage for all three hunt seasons for a single price)</i></p>	<p>\$275 per camper/trailer</p>
<p>MRA CAMPER STORAGE</p> <p>Allows the Permit Holder to store a single camper and/or trailer at Austin Hammock Campground beginning in General Gun Season through the end of Spring Turkey Season, for an additional fee per camper/trailer.</p>	
<p>MRA CAMPER STORAGE</p>	<p>\$100 per camper/trailer</p>

Appendix 5: PRA Map





Appendix 6: MRA Map



Appendix 7: Schedule of Violations

This appendix does not include every possible offense and is not comprehensive. Violations not included in this appendix will be included in the official Violation Report, along with a recommendation on penalties. The penalties listed here are suggestions; in all cases, the actual penalty is at the complete discretion of the Installation Commander.

Appendix 7: SCHEDULE OF VIOLATIONS			
1	Trespassing (use of, or to facilitate the use of, the installation without appropriate Permit)	1st offense	1 year
		2nd offense	2 years
		3 or more offenses	5 years
2	Failure to sign in/sign out of a Recreation Area	1st offense	1 month
		2nd offense	6 months
		3 or more offenses	1 year
3	Illegal transfer of a Permit	1st offense	1 year
		2nd offense	2 years
		3 or more offenses	3 years
4	Failure to purchase the proper Permit for intended recreational activities	1st offense	3 months
		2nd offense	6 months
		3 or more offenses	1 year
5	Failure to display permits, decals, licenses, or identification, or to submit to a vehicle inspection	1st offense	1 year
		2nd offense	2 years
		3 or more offenses	3 years
6	Permit Holder allowing Guest(s) onto the installation without personal escort, or without a temporary Guest Permit	1st offense	6 months
		2nd offense	1 year
		3 or more offenses	3 years
7	Entering a permanently closed area	Referral to Commander	
8	Sustained activity within a closed Management Unit	1st offense	1 year
		2nd offense	3 years
		3 or more offenses	5 years

9	Driving off designated roads	1st offense	3 months
		2nd offense	6 months
		3 or more offenses	1 year
10	Driving on a closed road	1st offense	1 year
		2nd offense	2 years
		3 or more offenses	3-5 years
11	Speeding and/or negligent operation of a vehicle	1st offense	3 months
		2nd offense	6 months
		3 or more offenses	1 year
12	Driving while not in good standing with motor vehicle requirements	1st offense	3 months
		2nd offense	6 months
		3 or more offenses	1 year
13	Driving or hunting while intoxicated	1st offense	3 years
		2 or more offenses	5 years
14	Possession of open alcohol container while operating a vehicle	1st offense	3 years
		2 or more offenses	3-5 years
15	Possession of open alcohol container outside of a campground	1st offense	1 year
		2 or more offenses	3-5 years
16	Littering	1st offense	3 months
		2nd offense	6 months
		3 or more offenses	1 year
17	Disorderly conduct	1st offense	1 year
		2nd offense	2 years
		3 or more offenses	3 years
18	Tampering with, handling, or removing ordnance, or parts thereof	Referral to Commander	
ILLEGAL TAKE OF WILDLIFE			
19	Close to 10 in. main beam and willingly checked in	1st offense	Warning
		2nd offense	1 week
		1st offense	1 week

	Less than 9 in. main beam and willingly checked in	2nd offense	6 months
	Avoiding check station	1st offense	6 months
		2nd offense	1 year
20	Poaching	1st offense	2 years
		2nd offense	5 years
21	Taking game out of season	1st offense	1 year
		2nd offense	3 years
		3 or more offenses	5 years
22	Baiting of game	1st offense	1 year
		2nd offense	2 years
		3 or more offenses	3 years
23	Leaving the installation with unchecked game	1st offense	6 months
		2nd offense	1 year
		3 or more offenses	3-5 years
24	Possession of a loaded firearm in a restricted area	Referral to Commander	
25	Possession of a firearm during closed season	1st offense	1 year
		2nd offense	3 years
		3 or more offenses	5 years
26	Possession of overpowered rim-fire rifle	1st offense	6 months
		2nd offense	1 year
		3 or more offenses	3 years
27	Possession of a loaded firearm inside the cab or a moving vehicle, in a campground, or at the Outdoor Recreation Office	1st offense	1 year
		2nd offense	3 years
		3 or more offenses	5 years
28	Hunting with dogs in Management Unit designated as Still Hunt Only; or hunting without dogs in Management Unit designated as Dog Hunt Only	1st offense	1 year
		2nd offense	2 years
		3 or more offenses	3-5 years
29	Threatening any Air Force employee, APCI employee, or wildlife officer	Referral to Commander Subject to barment from Installation	

30	Placing tree stands out of season	1st offense	3 months
		2nd offense	1 year
		3 or more offenses	2 years